

Now Selling!

Avalon Court

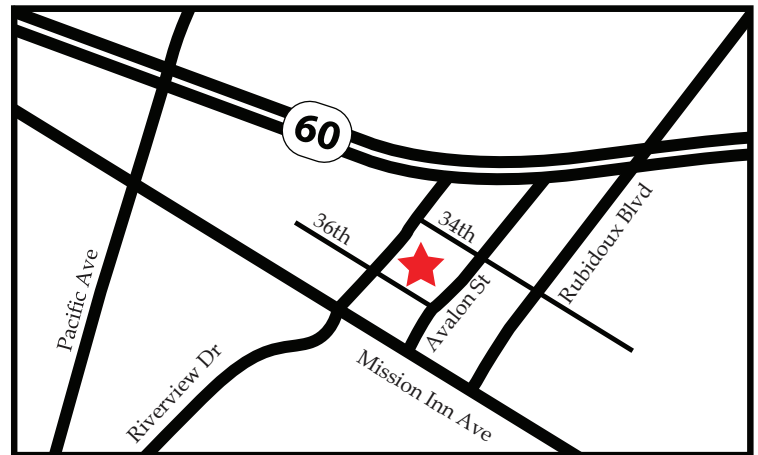
JURUPA VALLEY

24 New Homes
Very low 1.2% Tax Rate and NO HOA



Features Include:

- Three spacious floor plans designed for open living
- Close proximity to schools, I-15, 60 and 91 freeways, shopping, restaurants, Ontario International Airport, and other amenities
- Energy efficient homes featuring: solar, energy rated appliances
- No HOA
- Very low 1.2% tax rate



3550 Palmwood Dr, Jurupa Valley, CA 92509

Schools

- Ina Arbuckle Elementary School – 0.8 mi
- Mission Middle School – 0.9 mi
- Rubidoux High School – 1.8 mi
- University of California, Riverside – 5.7 mi

Utilities

- Water – Rubidoux Community Facilities District
- Trash – Burrtec
- Power – Sunnova Solar, SCE

Contact Lauren: 909-241-9679

You've found your
next home!

909-241-9679
www.montevistahomes.us



MONTE VISTA
HOMES



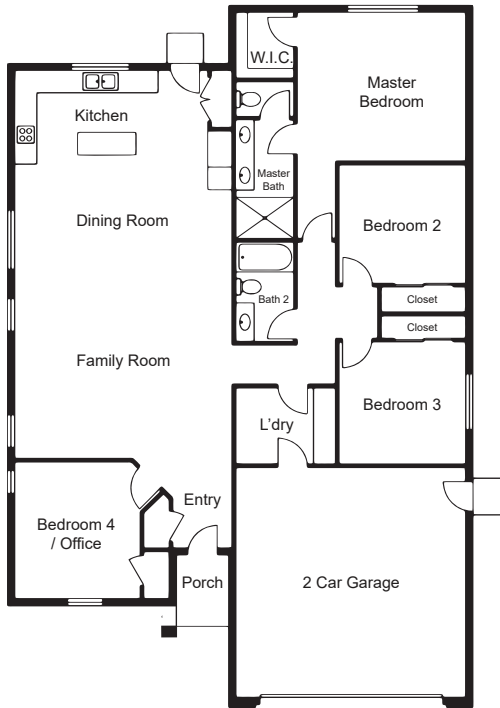
We are pledged to the letter and spirit of U.S. policy for the achievement of equal housing opportunity throughout the Nation.

Avalon Court

JURUPA VALLEY

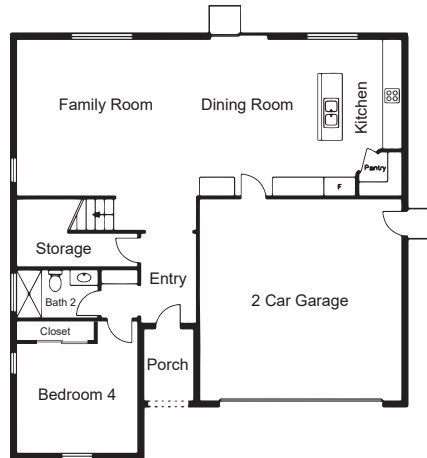
Plan 1

- 4 Bed/2 Baths/1,732 Sq.Ft.



Plan 2

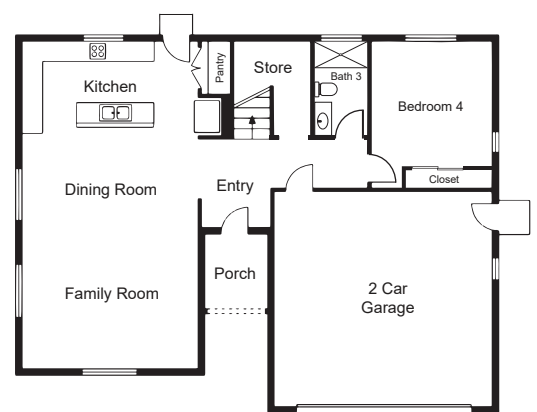
- 4 Bed/3 Baths/1,917 Sq.Ft.



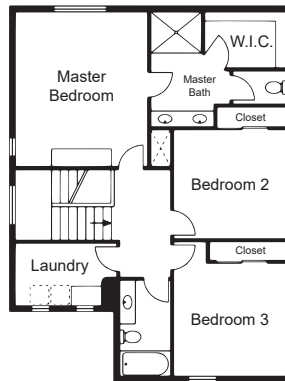
FIRST FLOOR PLAN

Plan 3

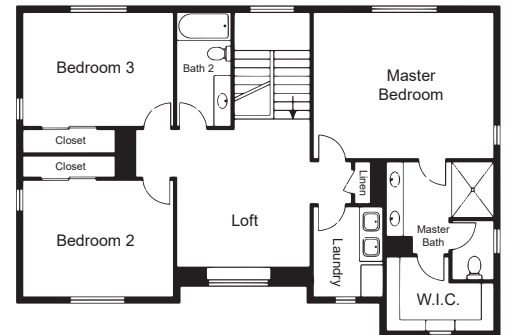
- 4 Bed/2.5 – 3 Baths/2,049 Sq.Ft.



FIRST FLOOR PLAN



SECOND FLOOR PLAN



SECOND FLOOR PLAN

You've found your
next home!

909-241-9679
www.montevistahomes.us



MONTEVISTA
HOMES

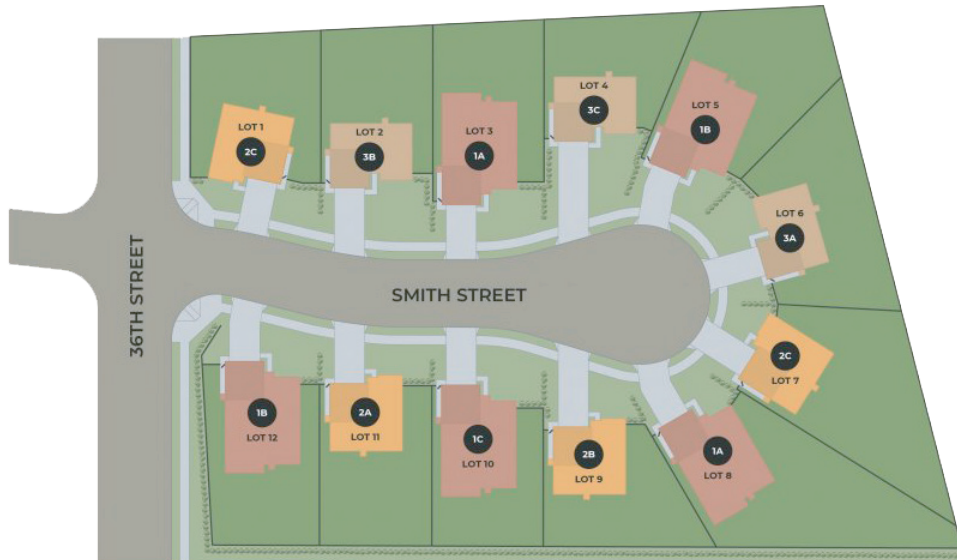


We are pledged to the letter and spirit of U.S. policy for the achievement of equal housing opportunity throughout the Nation.

License #01799146 | Monte Vista Homes reserves the right, to change maps, floor plans, elevations, exterior colors, standard features, specifications, options, amenities, materials, plotting, availability, promotions, association fees (if any) and pricing, at its sole discretion, without prior notice or obligation. Square footages and dimensions are approximate. Optional items may not always be available. Closing Costs are only applicable when using builders preferred lender. Garage size may not accommodate all vehicles. If you have any questions, please ask sales representative before you decide to purchase.

Avalon Court

JURUPA VALLEY



Site Plan Legend



Plan 1



Plan 2



Plan 3

You've found your
next home!

909-241-9679
www.montevistahomes.us



**MONTEVISTA
HOMES**



We are pledged to the letter and spirit of U.S. policy for the achievement of equal housing opportunity throughout the Nation.

License #01799146 | Monte Vista Homes reserves the right, to change maps, floor plans, elevations, exterior colors, standard features, specifications, options, amenities, materials, plotting, availability, promotions, association fees (if any) and pricing, at its sole discretion, without prior notice or obligation. Square footages and dimensions are approximate. Optional items may not always be available. Closing Costs are only applicable when using builders preferred lender. Garage size may not accommodate all vehicles. If you have any questions, please ask sales representative before you decide to purchase.