



MAGNIFICENT LOCATION

in trendy Highland Park



This new construction collection of only 9 modern single-family homes, is located in a secluded and very private cul-de-sac in trendy Highland Park. A stone's throw away from South Pasadena, Pasadena, Glendale and only minutes away from downtown LA's business district.

This luxury home features, 4 large bedrooms, 3 full baths, including a luxurious main bedroom, and a downstairs bedroom/office with a full bath, as well as a huge loft/bonus room upstairs. Your gateway to unmatched contemporary luxury awaits you - welcome home.

Homes Are Currently Under Construction

Call Luis Uribe
951-202-4787
for appointments to show.



**MONTE VISTA
HOMES**

www.MonteVistaHomes.us



Monte Vista Homes reserves the right to change maps, floor plans, elevations, exterior colors, standard features, specifications, options, amenities, materials, plotting, availability, promotions, association fees (if any) and pricing, at its sole discretion, without prior notice or obligation. Square footages and dimensions are approximate. Optional items may not always be available. Closing Costs are only applicable when using builders preferred lender. Garage size may not accommodate all vehicles. If you have any questions, please ask sales representative before you decide to purchase.



ARROYO RIDGE

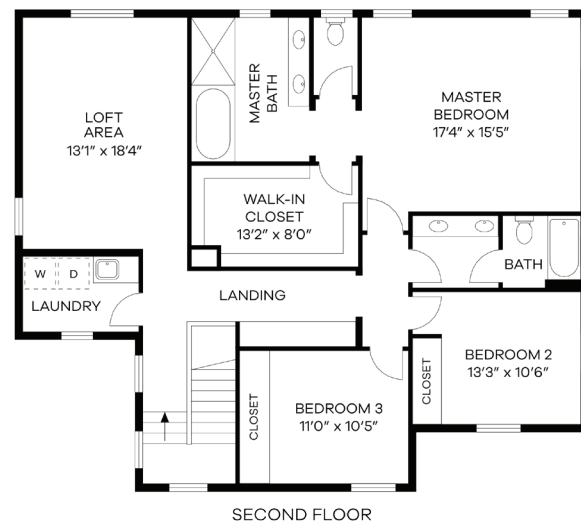
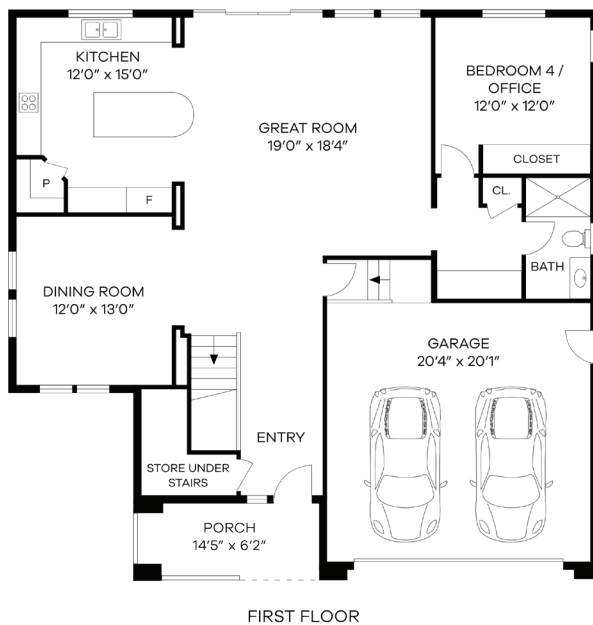
2,696 Sq Ft
4 Bedrooms
3 Baths



935 N. Staley Lane
Los Angeles, CA 90042



LOT 9



Call Luis Uribe | 951-202-4787
for appointments to show.



**MONTE VISTA
HOMES**

www.MonteVistaHomes.us