



# MAGNIFICENT LOCATION

*in trendy Highland Park*



This new construction collection of only 9 modern single-family homes, is located in a secluded and very private cul-de-sac in trendy Highland Park. A stone's throw away from South Pasadena, Pasadena, Glendale and only minutes away from downtown LA's business district.

This luxury home features 4 large bedrooms, loft and 3 full baths. It including a luxurious master bedroom, a downstairs bedroom/office with a full bath, as well as a large loft/bonus room upstairs. Your gateway to unmatched contemporary luxury awaits you - welcome home.

**Homes Are Currently Under Construction**

**Call Luis Uribe**  
**951-202-4787**  
for appointments to show.



**MONTE VISTA  
HOMES**

[www.MonteVistaHomes.us](http://www.MonteVistaHomes.us)



Monte Vista Homes reserves the right to change maps, floor plans, elevations, exterior colors, standard features, specifications, options, amenities, materials, plotting, availability, promotions, association fees (if any) and pricing, at its sole discretion, without prior notice or obligation. Square footages and dimensions are approximate. Optional items may not always be available. Closing Costs are only applicable when using builders preferred lender. Garage size may not accommodate all vehicles. If you have any questions, please ask sales representative before you decide to purchase.



# ARROYO RIDGE

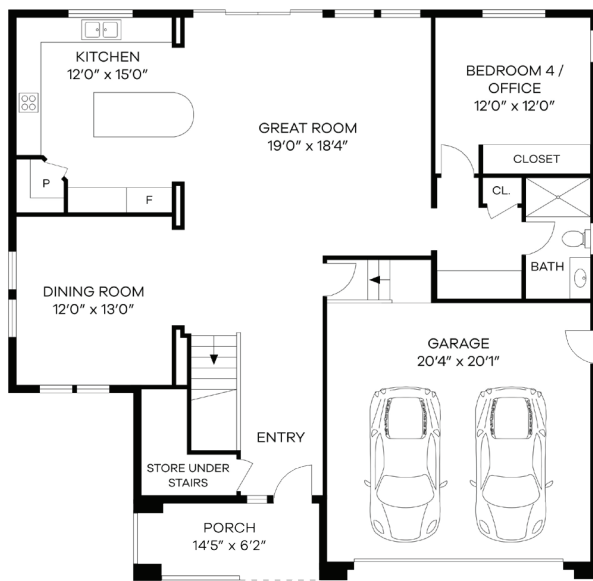
2,969 Sq Ft  
4 Bedrooms  
3 Baths  
Loft  
2-Car Garage



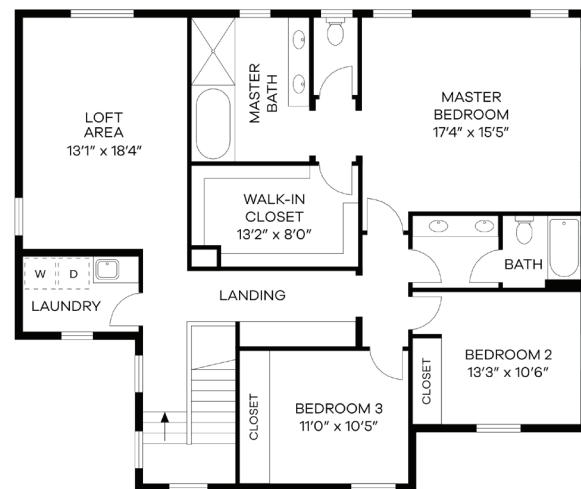
939 N. Staley Lane  
Los Angeles, CA 90042



## LOT 10



FIRST FLOOR



SECOND FLOOR

**Call Luis Uribe | 951-202-4787**  
for appointments to show.



**MONTE VISTA  
HOMES**

[www.MonteVistaHomes.us](http://www.MonteVistaHomes.us)